

Graphcat™ Photograph & Clip Art Cataloger

Version 6.7 for WordPerfect for Windows

Published by:
Science Translations
P. O. Box 1735
Westminster, MD 21158-5735 USA
<https://sciencetranslations.com>
<https://graphcat.com>

Graphcat Clip Art Cataloger v6.7

Clip art & photograph cataloger for WordPerfect 10 through 2021. (Older versions are available for WordPerfect 5.1 through 9.) Includes Windows 10 support, large catalog handling, page size selection, extension hiding, directory searching, uses all graphics formats supported by WordPerfect. User has complete control of catalog page layout and image options and size. Monthly winner, Sept 1997: Corel \$3 Million World Design Contest. Published by Science Translations.

All materials © Copyright 1993-2021 Science Translations,
All Rights Reserved.

GRAPHCAT™ is a copyrighted program. All rights are reserved. You may try out the trial version of the program for up to 30 days for free. If you continue to use this program, you must purchase the program. Buy online securely at <https://graphcat.com>

Purchasers receive an enhanced version of the program, over 1,000 Wood Clips graphics, and email support.

[Table of Contents](#)

INTRODUCTION & QUICK START. 3
 SETUP 3
 OTHER FILES 5

WHAT IS GRAPHCAT?. 6
 VERSION HISTORY AND NEW RELEASES OF WP 7
 SAVING HARD DRIVE SPACE 8

PROMPTS. 9

THE OPTIONS DIALOG BOX & CD-ROM SUPPORT. 11
 STARTING FILE NAME 11
 NUMBER OF IMAGES 11
 SINGLE IMAGE PER PAGE 12
 PAGE NUMBER 12
 CD-ROM SUPPORT 12
 RETRIEVE GRAPHICS or GRAPHIC ON-DISK?
 IN GENERAL 13
 CHANGING THE DEFAULT SETTINGS 14

STARTING GRAPHCAT FROM THE DESKTOP. 15

CREATING COLORING BOOKS USING
 GRAPHCAT AND WORDPERFECT.. . . . 16

EDITING AND PRINTING TIPS.. . . . 18
 HIGH-RESOLUTION PHOTOGRAPHS 18
 HORIZONTALLY SQUASHED IMAGES 18
 LANDSCAPE PRINTING 18
 SLOW PRINTING AND HALF-PAGE PRINT JOBS 19

TROUBLE-SHOOTER'S GUIDE-GRAPHCAT. 20

LIMITED WARRANTY. 22
 TRIAL USE LICENSE 22
 LIMITED DISTRIBUTION LICENSE 22

INDEX. 24

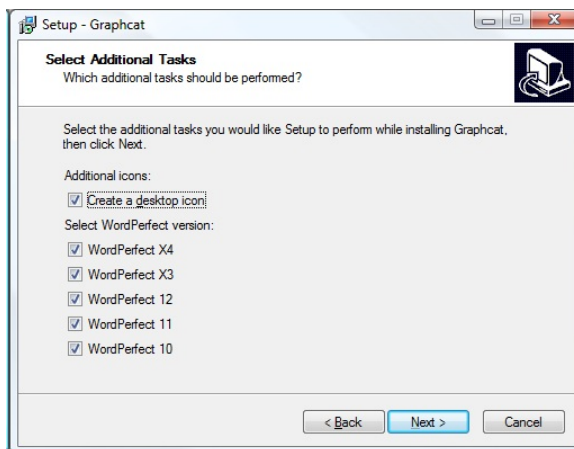
INTRODUCTION & QUICK START

GRAPHCAT™ is a high-power clip art and photo cataloger for WordPerfect, with support for partial catalogs, directory searching, and complete catalog layout control. GRAPHCAT uses all graphics supported by WordPerfect.

GRAPHCAT requires WordPerfect for Windows, any version from 10 and above, running in any version of Windows. Older versions are available on request, dating back as far as WordPerfect 5.1.

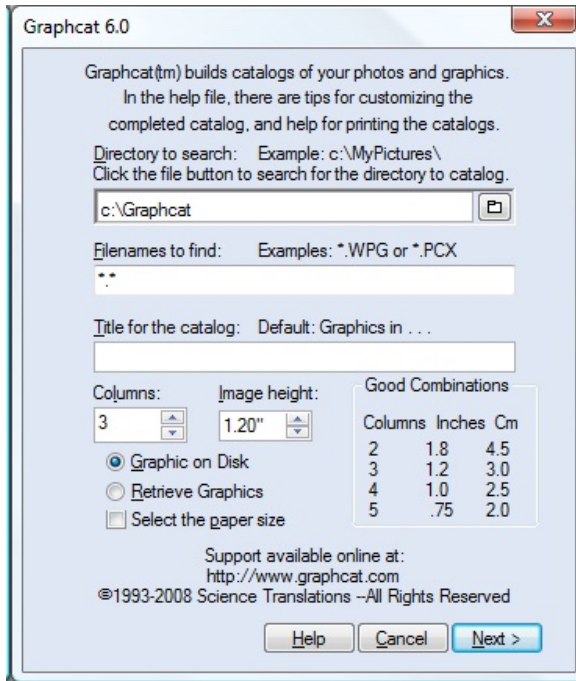
Why should you use a clip art cataloger that runs where you use your clip art? Flexibility. You can see just how your word processor will print your clip art or your photographs. Modern clip art isn't all pictures--much of it contains mathematically-defined shapes and fill patterns and colors defined by numbers. Pull those files into other catalogers and they will transform into minor variations. Pull those files into Graphcat Clip Art Cataloger, and you'll see what your desktop publishing projects and photo albums will look like.

SETUP

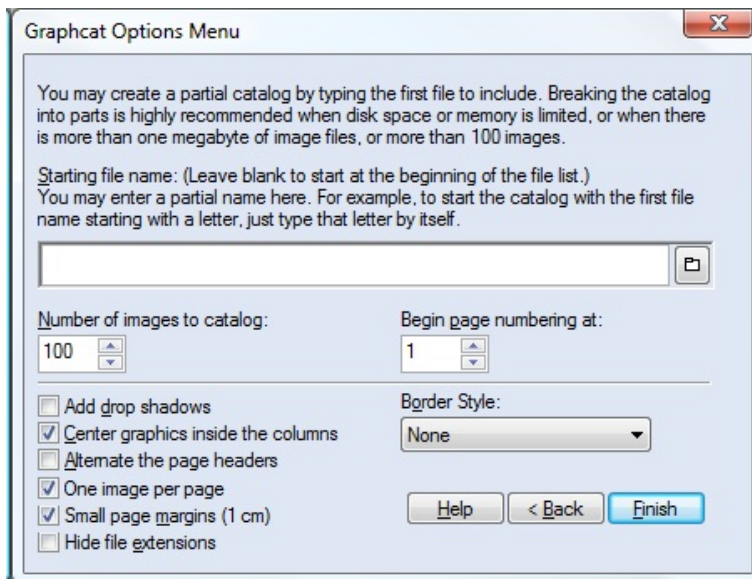


If running the Setup program on a network with a domain, log-in as Administrator--files Will Be Copied to WordPerfect's macros folder, which may be under the 'Program Files' folder. Graphcat requires write access to Wordperfect Macro Folders.

The Setup program will automatically detect the version of WordPerfect installed and show them on the list. The sample at left is not typical of most computers--it shows 5 versions of WordPerfect installed.



Next, run the main macro by pressing Macro, and entering GRAPHCAT. Answer the prompts for the drive and directory, file mask, catalog title, number of columns, and graphic height. The default values for columns and height allow 28 graphics per page, and there are default values for every entry (except the file directory in WPWin52), so you can just click on OK, NEXT or FINISH to accept the defaults as you learn the power that Graphcat brings to clip art catalogs.



ORDERS

GRAPHCAT is available to try before you buy, directly from <https://www.graphcat.com>. GRAPHCAT costs \$US 20., and a variety of payment types are available online at <https://graphcat.com>.

BUY SECURELY ONLINE AT <https://graphcat.com>

Email contact: <https://sciencetranslations.com/contact>

A thirty-day trial edition of Graphcat is available for downloading on our website. The trial version has limits on the total catalog size. There just isn't room for the 1,000 Wood Clips Bonus Clip Art files that are included with the full edition. Purchasers also receive technical support, and discounted upgrade pricing.

Support is by email or phone, at the same address and phone number used for orders, or via the Graphcat home page at <https://graphcat.com>

OTHER FILES

The files with .WPG extensions are clip art. The patterns and styles vary greatly, and they are provided as handy files for testing GRAPHCAT. They are all Wood Clips samples, of a variety of subjects. When you order, your bonus will contain additional Wood Clips, and a CDROM collection of Wood Clips is available.

Graphcat and Wood Clips are trademarks of Science Translations.

Corel, WORDPERFECT, and PRESENTATIONS are either trademarks or registered trademarks of Corel Corporations, Limited. Microsoft and Windows are registered trademarks of Microsoft Corporation in the USA and other countries. Adobe and Acrobat are trademarks of Adobe Systems Incorporated.

WHAT IS GRAPHCAT?

I've been collecting clip art and digital photographs for different projects. A small book, some newsletters, and still more photo projects. I've drawn some, scanned some paper clip art, and bought some disks of pictures. I was beginning to lose track of which disk had what pictures. I needed an index, a printout of every graphic I had, so I could keep them handy for reference.

The WPG files shipped with WordPerfect have their own printed picture indexes of art in the manual, but files of JPG or GIF files from the Internet are escapees from that elusive paperless office we all keep hearing about. And clip art CD-ROMs are uneven; some of them are full disks of excellent art on related topics, but others are totally unrelated pictures. Worse, because there are several flavors of each of the graphics file formats, some files will not be recognized by WordPerfect, and will read as bad. Overall, clip art disks are worthwhile, but a printed index would help sort the good files from the fuzzy junk.

And the commercial clip art isn't much better. Oh, the graphics are better, but the printed indexes are printed too small, or on newsprint, or are all mixed in with the pictures of every other graphic collection sold by that company.

Meanwhile, my co-workers on a newsletter project wanted to see all their clip art. I kept their graphics on a separate disk, but they wanted paper copies to refer to, so they could tell me, "Use that butterfly picture from page two." I began to create a sample document, with every graphic shown, and the file names, and the disk titles, and immediately found that there was too much work involved. I had two options: I could delegate the job, or write a macro to do the job. Since I couldn't find anyone who would spend three hours to create the index for each disk, I wrote GRAPHCAT. It's a lot faster than an assistant; it only takes from a few seconds to a few minutes to complete the job, depending on the speed of the computer and the size of the graphics files.

GRAPHCAT makes this task easy, so easy that nearly no effort is needed to create a new catalog for each directory or floppy of pictures. If the macro is told the drive and path of the files, the computer should do the rest.

With just that information, the WordPerfect macro reads the appropriate directory, identifies the graphics files, sets their sizes, locations, and options in a catalog, and leaves that catalog ready to print. Once the catalog is built, you may preview it, print it, and save it if you want. However, I don't recommend saving these files because they will be slightly larger than the cumulative size of all the graphics in the directory.

Since starting to catalog my clip art collection, I've found pictures I didn't know I had, and I've used some of those in new projects. Now that I don't have to hire extra help to create the listings, I can find the picture I want in no time, and, better yet, I can take the picture notebook with me to a co-worker, a client, or a conference, and I don't need to borrow someone else's computer and be at the mercy of someone else's operating system.

GRAPHCAT should work properly with ANY WP/Win language module. However, I have not been able to test every possible international combination of software and hardware. Please write if you find that GRAPHCAT fails in any way on your system. The issue, if any, is frequently that the international editions have additional codes in the default document initial codes for that version of WordPerfect. Removing all codes other than the [Lang:] code generally fixes the problem.

VERSION HISTORY AND NEW RELEASES OF WP

Writing software in a macro language is like controlling a rowboat by towing it from a distance of five parsecs. GRAPHCAT should work in all future updates of the WordPerfect versions supported. However, sometimes new “features” disable old features. When this happens, try turning “off” the new features if GRAPHCAT doesn't seem to like the new release. Better yet, call or write for support--there will be either a fix or a new release, as needed, to fix any problems caused by new features. For example:

NEW IN 6.7

Version 6.7 adds support for WordPerfect 2021 and Windows 10 updates through 21H1, which is the May 2021 semi-annual feature update.

NEW IN 6.6

Version 6.6 adds support for WordPerfect 2020 and Windows 10 updates through 2004, which is the May 2020 semi-annual feature update.

NEW IN 6.5

Version 6.5 adds support for WordPerfect X9 and Windows 10 updates through 1803.

NEW IN 6.4

Version 6.4 adds support for WordPerfect X8 and Windows 10, both 32 and 64-bit editions.

NEW IN 6.3

Version 6.3 adds support for WordPerfect X7 and Windows 8.1, both 32 and 64-bit editions.

NEW IN 6.2

Version 6.2 adds support for WordPerfect X6 and Windows 8, both 32 and 64-bit editions.

NEW IN 6.1

Version 6.1 adds support for WordPerfect X5 and Windows 7, including both 32- and 64-editions.

NEW IN 6.0

Version 6.0 adds support for WordPerfect X4, Corel WordPerfect Office X4, and Windows Vista. New layout feature 'Single image per page' is available when using 1 column-use it with an image height of slightly less than page height without margins.

The Setup program is completely new, and auto-detects versions of WordPerfect currently installed. The help file has been converted to 'CHM' format for full compatibility with new Windows versions.

NEW IN 5.0

Version 5.0 adds support for WordPerfect 9, also known as Corel WordPerfect Office 2000. For WPWin 7, 8, and 9, handling of very long filenames has been enhanced; Graphcat now calculates how long a filename will fit into a caption without wrapping or shrinking the caption beyond approximately 20 characters per inch, and places only those very long names into endnotes.

There are two new layout features in 5.0, again only for WPWin 7 & above: On the main screen, there is a new checkbox option to select the paper size, allowing you to create landscape catalogs automatically, or to use non-standard paper sizes. On the options screen, there is a new checkbox option to hide the filename extensions in the captions. For example, sample.wpg will have a caption of just 'sample'.

Also new in version 5, retail edition only, is the GC.WCM macro. The GC macro allows users to customize most of the default settings in GRAPHCAT. If you would prefer to always create catalogs that are centered, or horizontal-format, or of a specific size, you can do so. Instructions for GC.WCM are inside the file-just retrieve GC.WCM from your macro directory as you would open any other file, and follow the instructions. When done, run GC.WCM instead of GRAPHCAT. GC.WCM will use your defaults, and start GRAPHCAT for you automatically.

SAVING HARD DRIVE SPACE

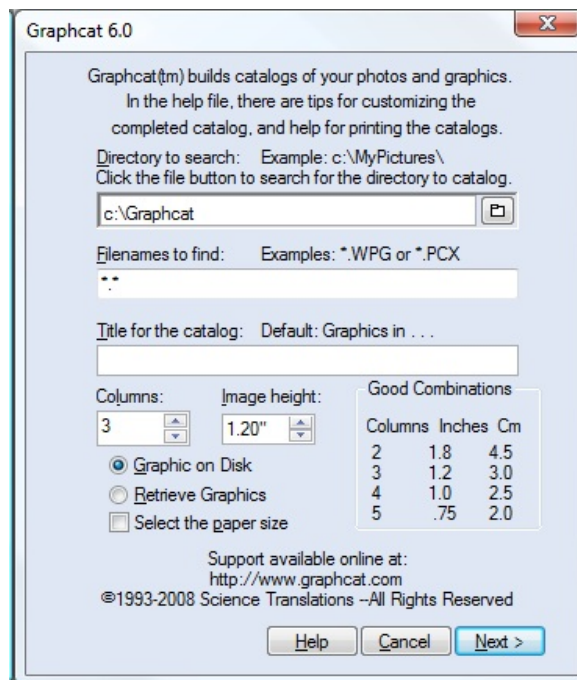
For each edition of Graphcat, there are several files that must remain on your hard drive to be used. If you install more than one version, each version of WordPerfect will have its own files. These files are GRAPHCAT.WCM, GRAPHCAT.EXE, and GRAPHCAT.CHM. The SETUP program will copy those files for you, and will also create a directory for the optional clip art samples and instruction files.

The clip art images need not remain on your hard disk once you have become comfortable with running the software. The macros, program files, and the help file must remain in the WP/Win macro directories.

PROMPTS

Start GRAPHCAT by pressing Macro (Alt-F10), typing GRAPHCAT, and pressing Enter. You must have at least two document screens available, but not to worry: GRAPHCAT checks for work space and will not let you do anything dangerous. A full-screen dialog box will appear, asking five questions. All of these questions are optional, and allow you to customize your catalogs.

Tip: To repeat any macro, press Macro (Alt-F10), and press the down-arrow key. The most-recently-used macro will appear. Press Enter to run it.



At the first prompt, enter the drive name and path for the subdirectory to be searched. You may omit the ending backslash if you like. GRAPHCAT is smart enough to accept the path name either way. Pressing Cancel (Esc) or clicking the Cancel button at any time will end the macro.

The file directory to search can be selected by clicking on the file icon, and double-clicking on the directory name.

The second prompt asks for the file mask. Any type of graphics file readable by WordPerfect may be entered here. What's a file mask? The simplest file mask is the famous "*.*" which means the files with any name and any extension. The asterisk substitutes for any group of characters, and a question mark substitutes for any single character. The period is required.

For example, to inventory all the WPG clip art in a directory, use a file mask of "*.WPG" or to find all the files starting with "BIG-" use "BIG-*. *" as the answer at the second prompt. If you leave this prompt blank, Graphcat will look at "*.*" or all the files in the directory.

It's very easy to just enter *. * as the file mask and try to search every file in a directory for graphics. Don't do it! The wild card extension is intended for cataloging mixed disks of graphics files. If you use the *. * choice for directories containing program files, GRAPHCAT will run far more slowly, because it must load and identify as bad every program file in the directory. For best and fastest results, use the real file mask of the graphics you are looking for, unless you really do intend *. * to mean ALL the files in the directory.

The third prompt asks for a title, and the macro will place that title in a header on each page of the catalog. I recommend entering the name of the graphics collection or the name of the archived backup for that collection, such as "Business Graphics--BUSINESS.ZIP" in this area. You may leave this prompt

blank if you wish, and Graphcat will create a title for you, reading “Clip Art in “ and the file path and mask from the first two prompts.

The next two prompts request the number of columns and the height to make each graphic. WordPerfect will calculate the width to keep the graphics true to scale, room permitting. If less than about twice the height of a graphic is available for the width, some graphics in horizontal format will be compressed to fit the column. For four columns, a height of about one inch or 2.5 cm allows ample room, and 28 images fit on one page. Some of the best combinations of columns and image heights are displayed near the right side of the dialog box.

INTERNATIONAL USERS: GRAPHCAT needs to know how tall you would like your graphics printed in your catalog. That measurement is entered in inches if the language WordPerfect detects is US English. For all other languages, including other varieties of English, centimeters are used automatically. If you would like to use a different measurement, you must add a measurement identification letter after the number, using the standard WordPerfect abbreviations. For example, i or " for inches, c for centimeters, or p for points.

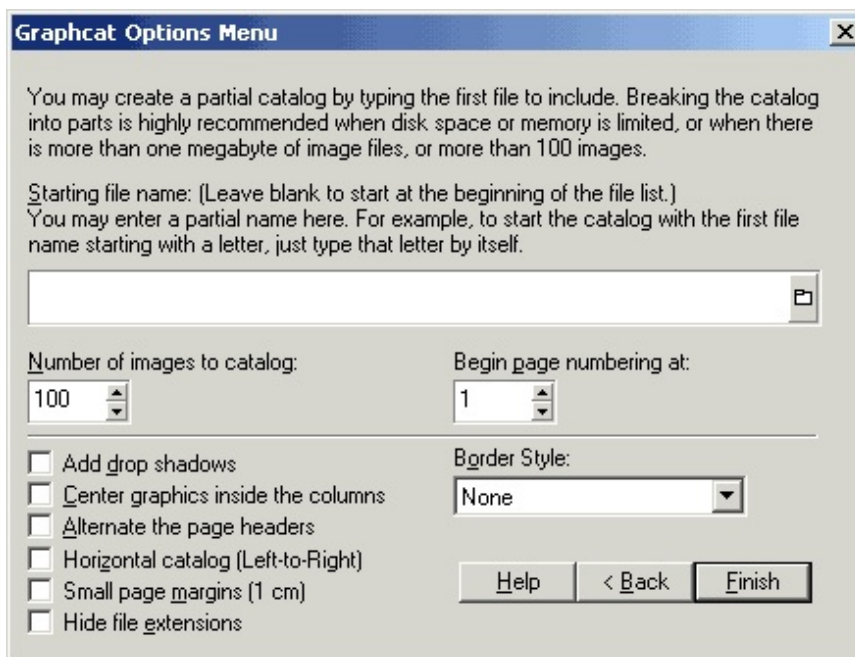
WPWin32: GRAPHCAT now uses a counter control to allow you to click the image height up or down, and that control is set in inches if you are running US English, and centimeters otherwise.

Once the last entry has been made, click on OK or NEXT, and GRAPHCAT will go on to the Options menu. Every selection in Options may be skipped-Graphcat will use either the options from the previous catalog, if any, or the default values. As each graphic is loaded, the macro announces the new graphic in a status message.

THE OPTIONS DIALOG BOX & CD-ROM SUPPORT

Graphics collections have gotten very large. I frequently hear from customers that they have several thousand images in one directory, and that they want to inventory that one big directory as one group. That is impractical for many reasons, but the most important reason to break a catalog up into pieces is that you cannot expect WordPerfect to run smoothly with ten megabytes of image files in its document memory. It just won't happen.

You can create a partial catalog in WordPerfect 6 & above by entering your choices on the options menu, which will appear automatically once you complete the first dialog box. The menu has three items to fill in. In most cases, you will be able to click on OK immediately without making any changes here.



STARTING FILE NAME

This is the file name to begin the catalog with. You may manually type in the name of the image, or you may choose the name from a file list (recommended!) by clicking on the file icon or by pressing Alt-Down Arrow.

You may also enter a partial file name here. For example, to start the catalog with the first image starting with the letter "G", you would just type that letter here.

This box will start out as blank the first time that you run Graphcat in a directory, or the

first time in a WordPerfect session. However, if you run Graphcat again in the same directory, this box will automatically hold the next file name to catalog, if the last catalog was of fewer graphics than those remaining in the directory.

NUMBER OF IMAGES

Select how many images to catalog here. You will probably choose to catalog your images in groups of 56 (2 pages of 28 images in 4 columns) or some other number that will fill a set of pages. This number will carry over from one run of Graphcat to the next, within the same WP session.

SINGLE IMAGE PER PAGE

The new 'Single image per page option appears on the Options Menu, but ONLY if the number of columns chosen is 1. If more than 1 column was chosen, the 'Horizontal catalog' option appears instead.

PAGE NUMBER

Select what page number to use for the first page of the catalog. If you are cataloging the same directory as a previous run, Graphcat will provide a default choice of the last page that was created, plus one.

CD-ROM SUPPORT

For cataloging a large group of files, and especially for CD-ROM clip art disks, set Graphcat to catalog as many images as will fill one page, or a multiple of pages, with no partial pages. Print the catalog normally when done, and restart Graphcat. Press (Enter) at both screens, and Graphcat will prepare the next set of images, creating a catalog of the same size as the first, and starting with the next image to be cataloged, and the next page number. Graphcat can work all the way through a CD-ROM in this way, simply by breaking up the catalogs into printable sizes.

RETRIEVE GRAPHICS or GRAPHIC ON-DISK?

When should you use the 'Retrieve Graphics' option? First, let's explain how WordPerfect handles graphics: A graphic in a WordPerfect document is converted internally into the WPG format. This is done to make it possible to display the image in the document and print the document, and cannot be completely avoided. If you choose to insert a graphic as a 'graphic on disk', WordPerfect converts the image as needed, but does not save the graphic as part of the document. Instead, WP will re-read the document file on disk as needed in order to display and print the document. If the file is no longer available, then the display or print process will fail, and WordPerfect will display a large red message where the image should be.

On the other hand, if you insert a graphic into a document in the default method, shown as 'image' in the 'Content' settings for the graphic, then WordPerfect creates a copy of the image and stores it as part of the document file header.

Both these methods have advantages and disadvantages to their use. 'Graphic on disk' saves hard drive space. This is the proper choice when you will add a graphic to a letterhead or any document that will serve as a template for many other documents. If a logo is changed, the image will show in it's new form in any document that uses it from the time of the alteration onwards. This works nearly perfectly, as long as the image shape did not change when it was revised--the logo has to fit in the same size box as the previous version.

Retrieving the image is useful when you must save or send a document, but don't want to send the graphics individually. The file will be larger, but easier to work with.

For graphics catalogs, GRAPHCAT defaults to 'Image on-disk' because it saves memory, and because most clip art catalogs are created, printed, and then not saved. You should use the 'Retrieve graphics' option if you are creating a photo album, and will be editing the catalog and sending it as a WordPerfect document. If you are creating a catalog of images found on a network drive, retrieving the graphics will greatly improve viewing and printing speed, and far reduce the amount of traffic on the network during viewing and printing.

Note: If you are creating a photo album that will be exported from WordPerfect as a PDF, the images will be embedded in the file during the export process, whether you use WordPerfect publish-to-PDF feature or Adobe Acrobat, so it does not matter whether you retrieve the images into the catalog or not.

Overall, when in doubt, accept the default setting of 'Image on disk'.

IN GENERAL

If GRAPHCAT and WordPerfect decide that a graphic in your sample directory is not a proper graphics file, GRAPHCAT will add that file name to a list of files that could not be loaded, and that list will be printed at the end of the catalog. You may delete that message after the catalog is prepared, or you may try to convert the bad graphic or edit it with a graphics program, resave it, and run GRAPHCAT again. Because not every version of every graphic format is supported by WordPerfect, I prefer to leave the file list in the catalog to identify a file that may be usable in other software, but not in WordPerfect. (Or the disk may contain non-graphic files, such as a README.DOC, and these files will be listed automatically at the end of the catalog.)

When the catalog is finished, a dialog box will appear to let you know. From this point on, the catalog is just a complex document, and you may edit it or print it as you would any other large document.

GRAPHCAT may be stopped in mid-inventory by pressing Cancel (Esc) just once; there may be a time lag of a few seconds before the macro stops. If you use Cancel to stop GRAPHCAT, the macro will warn you that the catalog is incomplete.

GRAPHCAT has error trapping routines built in to prevent garbage entries, and will not try to run if you start without sufficient work space. If you wish to import the catalog into a document, run the macro first, and then merge the other text or formatting into the catalog.

In general, Graphcat can create a larger catalog of graphics than WordPerfect can print. The maximum catalog size for each user will vary greatly, depending mostly on memory. Try not to catalog more images than will fit in memory. Although WordPerfect will use disk space as extra work space after memory is full, performance and speed will drop dramatically, and your results will be both faster and more reliable if you split large catalogs up into several separate mini-catalogs.

CHANGING THE DEFAULT SETTINGS

Graphcat settings can be changed for nearly all selections, including default starting folder, number of columns, image size, and so on. Find and open the GC.WCM file in the WordPerfect Macro Folder--you can find the folder by selecting Tools, Settings, Files, Merge/Macro from the WordPerfect menus. Follow the directions in the GC.WCM file, resave it, and run the GC macro instead of Graphcat. If you want to skip your changes, run Graphcat.wcm as usual. If you want multiple sets of defaults for special projects, you can make extra copies of GC.WCM--just copy and rename, in the macro folder, as GC-PICS.WCM, GC-DRAWINGS.WCM, etc.

STARTING GRAPHCAT FROM THE DESKTOP

Sometimes you start WordPerfect specifically to create a catalog of clip art or photographs, or you've just transferred a camera full of digital photos, and you want to immediately start Graphcat to make a contact sheet. For those times, you can create a desktop icon or a Start menu entry that will start Graphcat automatically. You can make as many of these icons as you want, so you can have one for any macro that you run frequently, as long as that macro is normally run using an empty document as a starting point. There are several steps, but they're easy; just follow along step-by-step:

For this example, I'll use WordPerfect X4 and Graphcat, but the steps are exactly the same for any recent WordPerfect version and any macro. There are several click & drag steps in this process, so working from a printed copy of these instructions may be easier than reading them onscreen as you work. You'll need access to the desktop, so close or minimize all other programs to give you space.

First, you'll need an icon for WordPerfect on your desktop; if you already have one there, skip to the next paragraph. Otherwise, RIGHT-click on the Windows Start button. From the popup menu, choose Open. Find the group of WordPerfect programs and open it.

You're looking for the icon that you usually use to start WordPerfect. Using the RIGHT mouse button, drag the icon out to a clear area on the desktop. Let go of the mouse button; from the popup menu, choose 'Create Shortcut(s) here'. You should have a new icon, usually named 'Copy of WordPerfect.'

Right-click on the new icon, and choose 'Rename'. Change the name of the shortcut to 'Graphcat'. Click once on the desktop when you've finished typing the name.

Next, you'll edit the icon properties. Right-click on the icon, and choose 'Properties' from the menu; it's usually the bottom item. In the target line of the dialog box, you'll see a highlighted line, reading something like "c:\Program Files\Coreel\WordPerfect Office X4\WordPerfect Office X4\Programs\wpwin14.exe" (including the quotes). Press the End button once to turn off the highlight and to move to the end of the line. Type ' /m-graphcat.wcm' and check your work: the end of the line should look similar to this; make sure that you've typed OUTSIDE the quotes.

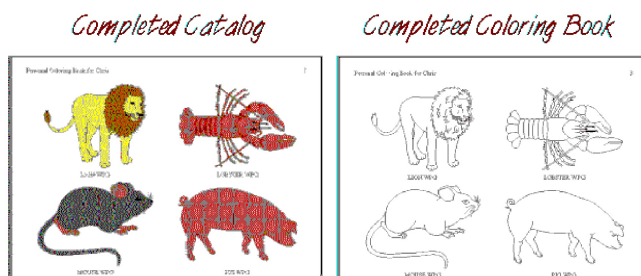
```
"c:\Program Files\Coreel\WordPerfect Office X4\WordPerfect Office X4\Programs\wpwin14.exe" /m-graphcat.wcm
```

Press Enter or click on OK when done. Double-click the new icon to run both WordPerfect and Graphcat. You're done. Click the top right 'X' to close any of the menu boxes that remain open on your screen. If you prefer to have a Start menu shortcut to Graphcat, instead of a desktop icon, use the LEFT mouse button and drag it into the WordPerfect group in the menu before you close the boxes, and the shortcut will appear in that portion of the menu the next time you use the Start button.

CREATING COLORING BOOKS USING GRAPHCAT AND WORDPERFECT

A coloring book is just one example of how Graphcat catalogs can be changed by editing styles, and is probably the best example to get you started.

It is possible to create a coloring book in WordPerfect with very little work, if you have the right kind of clip art files. Only vector clip art will work, and not bitmapped (scanned) art. Vector clip art doesn't contain pictures, but contains the mathematical instructions to create pictures by building them out of shapes and adding fill patterns. WordPerfect can convert all those fill patterns to white, resulting in a coloring-book-style image.



These directions will only work in a version of WordPerfect that uses graphic styles. These are used in version 6.0 and above, either DOS or Windows versions. The directions shown here are for WordPerfect 8, but similar steps work in other versions of WordPerfect. In each case, you will edit a graphic style named Graphcat, and change the fill

attributes to white. It does not matter how many images are in the catalog, because you will edit the style that controls all the images, rather than attempting to edit each image individually.

Here's how to create a coloring book:

First, locate the vector clip art. The sample WPG files that ship with WordPerfect are in vector format. Most CGM and WMF files also contain vector drawings. Note that it is possible for a vector file format, like WPG, to contain a scanned/bitmapped drawing, and those won't empty out to a white fill pattern.

Next, start WordPerfect, run Graphcat, and create a normal clip art catalog. Settings that work well are two columns, 2.5" / 8 cm height or one column and an image height as large as that of the blank page without margins. You can enter a child's name in the page title, such as Coloring Masterpieces by Chris. On the Graphcat options screen, choose Small Margins, Center Images, and Borders: None.

Once Graphcat has finished creating the catalog, you'll need to edit one style to change the fill patterns of all the images to white. From the WordPerfect 8 menu, select Tools, Graphic Styles... (In WP 10, it's on the Format menu.)

A new dialog box will appear, titled Graphic Styles. At the bottom, choose List styles from Current Document. At the top of the dialog, Box should be checked. In the list of Styles, scroll down as needed, click once on Graphcat and then click on Edit.

Another dialog box will appear, titled Edit Box Style. Click on Settings.

Yet another box, titled Image Settings, will appear. The preview box at the right will be gray--this is normal, because you are editing a style, rather than an image. Click on Fill Attributes, and then on White, and then on OK. Finally, click on OK and Close as needed to return to the document. All the images should now be ready for printing and coloring. If any still have color in them, they are probably bitmapped or scanned images, and not in vector format.

Print the completed coloring book normally. Prepare for quiet time. Enjoy.

EDITING AND PRINTING TIPS

HIGH-RESOLUTION PHOTOGRAPHS

WordPerfect versions below X4 have problems with images that are large--the error message is that the 'image exceeds 27"'. You can convert the images to BMP format in Corel Presentations, and then create a catalog in WordPerfect & Graphcat, or upgrade to WordPerfect X4 or above.

Large photographs can also overwhelm your computer if there isn't enough memory installed. When in doubt, size your catalogs to be one page long. You can continue a catalog starting with the next available page number and next available image; just run Graphcat again in the same WordPerfect session, and Graphcat will show the next filename and page number on the Options page.

HORIZONTALLY SQUASHED IMAGES

If your images appear to be squashed horizontally when you print or preview, you need to use either fewer columns or a smaller image height. To change the height of the images, clear the document and restart GRAPHCAT. You can change the columns without rerunning GRAPHCAT, but if you are not comfortable with using the Reveal Codes feature, it may be easier to simply run Graphcat again with the new columns setting than to edit the completed document. First, press Ctrl-Home to reach the extreme top of the document, before any codes. Turn on Reveal Codes (Alt-F3), and look for a code that looks like this:

```
[Col Def: Newspaper...
```

Place the cursor immediately after that code, and press Layout, Columns, Define from the menu. Change the number of columns and click on OK. You may now delete the first of the two column definition codes, turn off Reveal Codes (Alt-F3), and check your document by printing or previewing again. The images should no longer be squashed, but with extremely wide images, you may need to try still fewer columns, or perhaps none at all.

LANDSCAPE PRINTING

If GRAPHCAT detects any codes in your document, even a page definition, it will open a new document before creating your catalog, and the document you started from will be left unchanged. So if you need a graphics catalog on a page size that is not your default paper size, such as a landscape version of A4 or 8 1/2" x 11", then follow these steps:

On the first Graphcat screen, add a checkmark at "Select the paper size." Graphcat will display the paper setup screen after you finish click on OK. Choose landscape or another paper size as needed, and click on OK. Remember to choose Manual feed as the source if the paper won't feed from the standard tray.

SLOW PRINTING AND HALF-PAGE PRINT JOBS

A page full of graphics will print slowly, and most laser printers do not come equipped with enough internal memory to print a complex catalog at the highest resolution settings. If you have chosen to create a catalog on larger paper than letter or A4, you need more memory in the printer.

On a laser printer, if the entire page does not print, try printing the page at a lower setting for graphics quality, or use fewer columns. Again, note that reducing the size of a graphic does not reduce the complexity of the print job, so a page with one column of larger graphics will print more quickly than a page containing several columns of small graphics.

[TROUBLE-SHOOTER'S GUIDE-GRAPHCAT](#)

- “In WP11, my default path to search for graphics is bad; it looks like there are two paths there.”

There is a bug in the initial release of WordPerfect 11 that stores incorrect information in several of the default file locations. Graphcat reads those file paths; you can type over it or search for a file location as always, but fixing this WP bug will prevent other problems. The fix is in the service packs for WordPerfect 11, so go to the download site for Corel patches to WordPerfect, get the latest service pack, and install it, and then check and fix the paths as needed.

To check the file locations, preferably after applying the WordPerfect service pack, go to: Tools, Settings, Files, Graphics, and use the browse button on the right of the top entry (“Default Graphics Folder”) to find the folder where you want WP and Graphcat to look for photos or clip art.

- “Sometimes my catalogs are blank!”

WordPerfect's settings for ‘View Graphics’ are turned off. If your catalog appears to be blank, go into the View menu, and click on Graphics, and the catalog images will appear. This will only fix the problem for the current document; to fix it for all documents, go to Tools, Settings, Display, and on the Document page, add a checkmark next to Graphics.

- “I can't run my macros anymore in WordPerfect. It started when I tried to run them in a another version of WordPerfect.”

WordPerfect will, under certain conditions, ERASE the contents of a macro, usually when it thinks that the macro must be recompiled. Reinstall Graphcat from the original Setup program. You can identify damaged macros by their file size, which will always be about 2K.

- “GRAPHCAT runs perfectly, but I cannot print the result file. The error messages say I don't have enough disk space, or that the swap file is full, or WPWin says a memory error has occurred.”

This can happen if you are trying to catalog a large file of clip art, and you have very little memory or hard disk space available for WordPerfect to work in. To fix it, from the Windows Program Manager, highlight the WP icon, and choose File, Properties. If you have another hard drive partition available with more space, such as D: or E:, change the Working Directory prompt to that drive, click on OK, and restart WordPerfect. If there is no other partition, you will need to move or delete unneeded files from your hard disk to free up some work space.

You should try breaking the catalog into page-size chunks; see the Options Menu instructions. Setting the graphics quality to medium or draft also helps reduce the amount of data that must be handled for each page, and eliminates some problems.

Remember that printing images smaller does NOT reduce the amount of memory they use during printing. A page containing fewer large images is easier to print than one with many small images.

- “Sometimes when I use the *.* file mask, GRAPHCAT loads a file as a graphic that isn't one. The document loads and prints normally, but the box is either empty or contains a random pattern.”

Both conditions are caused by trying to use the *.* file mask option inappropriately. The * wild card choice was intended for reading disks containing mixed graphics in different formats, such as WPG and GIF and JPG graphics mixed together, NOT for attempting to load every program file on your hard drive in the attempt to see if any of them are graphics. Graphcat will correctly identify nearly every file as a graphic or not a graphic, but there are exceptions.

To avoid these problems altogether, when cataloging a directory of mixed graphics and program files, use the appropriate file mask, such as *.JPG or *.WPG on the second line of GRAPHCAT's menu, and save the wild card use for disks holding almost entirely graphics

LIMITED WARRANTY

THIS SOFTWARE AND MANUAL ARE PROVIDED FOR EVALUATION ONLY, ON AN "AS IS" BASIS. SCIENCE TRANSLATIONS DISCLAIMS ALL WARRANTIES RELATING TO THIS SOFTWARE, WHETHER EXPRESSED OR IMPLIED, INCLUDING BUT NOT LIMITED TO ANY IMPLIED WARRANTIES OF MERCHANTABILITY OR FITNESS FOR A PARTICULAR PURPOSE. NEITHER SCIENCE TRANSLATIONS NOR ANYONE ELSE WHO HAS BEEN INVOLVED IN THE CREATION, PRODUCTION, OR DELIVERY OF THIS SOFTWARE SHALL BE LIABLE FOR ANY INDIRECT, CONSEQUENTIAL, OR INCIDENTAL DAMAGES ARISING OUT OF THE USE OR INABILITY TO USE SUCH SOFTWARE, EVEN IF SCIENCE TRANSLATIONS HAS BEEN ADVISED OF THE POSSIBILITY OF SUCH DAMAGES OR CLAIMS. THE PERSON USING THE SOFTWARE BEARS ALL RISK AS TO THE QUALITY AND PERFORMANCE OF THE SOFTWARE.

This agreement shall be governed by the laws of the State of Maryland and shall inure to the benefit of Science Translations and any successors, administrators, heirs and assigns. Any action or proceeding brought by either party against the other arising out of or related to this agreement shall be brought only in a STATE or FEDERAL COURT of competent jurisdiction located in Carroll County, Maryland. The parties hereby consent to in personam jurisdiction of said courts.

TRIAL USE LICENSE

Graphcat is NOT a public domain program. It is copyrighted by Science Translations. This software and accompanying documentation are protected by United States Copyright law and also by International Treaty provisions.

Science Translations grants you a limited license to use this software for evaluation purposes for a period not to exceed thirty days. If you continue using this software after the thirty-day evaluation period, you MUST make purchase a license from Science Translations.

LIMITED DISTRIBUTION LICENSE

INDIVIDUALS may distribute the trial edition of Graphcat to friends or associates, provided they charge no fees for this service, and they convey a complete and unaltered copy of the shareware version of this product.

Permission to distribute the Graphcat package is not transferable, assignable, saleable, or franchisable. Each vendor wishing to distribute the package must independently satisfy the terms of this limited distribution license.

U.S. Government Information: Use, duplication, or disclosure by the U.S. Government of the computer software and documentation in this package shall be subject to the restricted rights applicable to commercial computer software as set forth in subdivision (b)(3)(ii) of the Rights in Technical Data and Computer Software clause at 252.227-7013 (DFARS 52.227-7013). The Contractor/manufacturer is Science Translations, Box 1735, Westminster, MD 21158-5735.

Science Translations may revoke any permissions granted here, by posting notice online at <https://www.graphcat.com>. All rights not expressly granted here are reserved to Science Translations.

You are encouraged to pass a copy of the trial edition of GRAPHCAT along to your friends for evaluation. All purchasers will receive a copy of the latest retail version of GRAPHCAT and all the current bonuses.

Site Licenses, volume discounts, and the newest ordering information are online at:
<https://www.graphcat.com>

INDEX

album. 13
 BMP. 18
 bonus. 5
 caption. 8
 color. 17
 coloring book. 16, 17
 columns. 4, 10-12, 14, 16, 18, 19
 Corel. 1, 5, 8, 15, 18, 20
 default settings. 8, 14
 editing. 13, 16-18
 endnotes. 8
 error messages. 20
 GIF. 6, 21
 International. 7, 10, 22
 Internet. 6
 JPG. 6, 21
 landscape. 8, 18
 laser printers. 19
 long filenames. 8
 margins. 8, 16
 memory. 11, 13, 18-20
 ordering. 23
 photo. 3, 6, 13
 photographs. 3, 6, 15, 18
 Presentations. 5, 18
 SETUP. 3, 8, 18, 20
 tips. 18
 trial edition. 5, 22, 23
 trouble. 20
 Windows Vista. 8
 Wood Clips. 1, 5
 WPG. 5, 6, 8, 9, 12, 16, 21
 WWW. 5, 23